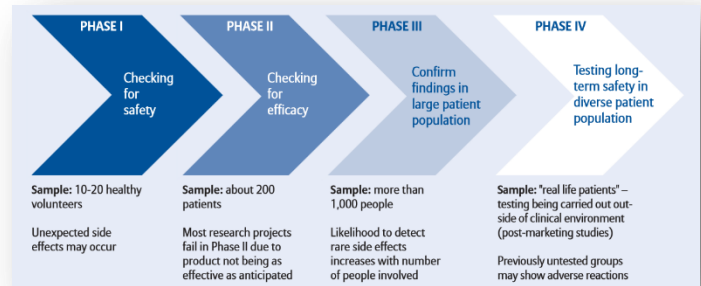


The clinic will be different to others that you have attended. We tend to see fewer patients and spend more time with each one that for non-trial based appointments. We also see patients with a range of diseases that are potentially eligible for our studies. There are good opportunities to discuss translation oncology and therapeutics in our clinic. We hope to discuss some of these topics listed by the end of your time in clinic, if not there are selected references at the end of the page.

Drug Development

- ❖ Pre-clinical information to enter human studies
- ❖ Phases of clinical development



Ethics of trial (early phase) participation

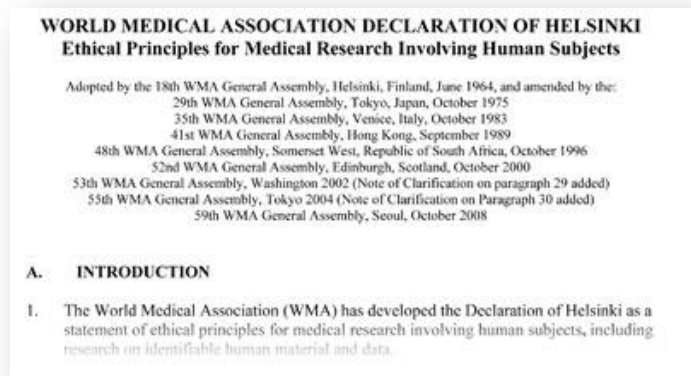
- ❖ Autonomy
- ❖ Beneficence
- ❖ Non-maleficence
- ❖ Justice
- ❖ Consider what is different for phase I?

General discussion about taking part in early phase clinical trials

- ❖ Either sit in new patient consultant or cover the same discussion
- ❖ Review patient information sheets for the clinical trial

Patient perspective

- ❖ Discussion with Research Nurse
- ❖ Discussion with Patient



First established in 1964 in the wake of the Thalidomide tragedy, the Declaration of Helsinki as a statement of ethical principles for medical research involving human subjects, including research on identifiable human material and data.

Additional resources (Click on blue download button to download article)



Professor Jodrell's talk on early phase trials



Hoelder, Clarke and Workman. Discovery of small molecule cancer drugs: Successes, challenges and opportunities. (2012)

Team:

Professor Duncan Jodrell	duncan.jodrell@cruk.cam.ac.uk
Dr Bristi Basu	bristi.basu@cruk.cam.ac.uk
Dr Richard Baird	rdb39@medschl.cam.ac.uk
Dr Simon Pacey	simonpacey@medschl.cam.ac.uk

If you enjoyed the morning feel free to contact us to discuss returning for more experience or planning future projects and attachments